



PÓS-GRADUAÇÃO LATO SENSU

Curso: Banco de Dados


Disciplina: Laboratório de Data Warehouse e Business Intelligence
Professor: Fernando Zaidan

Unidade 4
2012



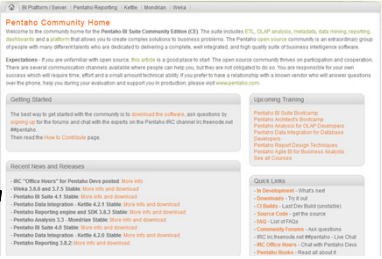
Crédito dos Slides: Clever Junior

ETL Utilizando Pentaho Data Integration PDI (Kettle)



Se ainda não tem o PDI

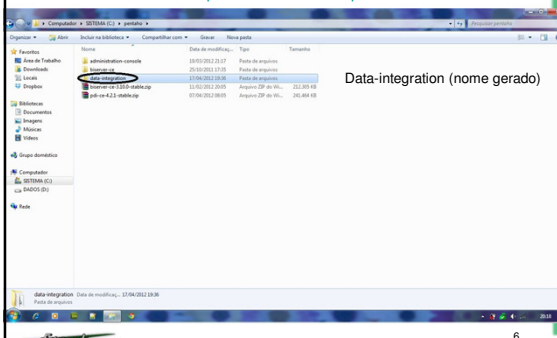
- Baixar do site: <http://community.pentaho.com/>



Sobre a ferramenta

- Data Integration (PDI) é uma ferramenta muito poderosa de extração, tratamento e carregamento de dados.
- É uma ferramenta da empresa do Pentaho
- Ela extrai (de diversas fontes), trata, e carrega os dados sobre uma outra base de dados (Data Warehouse).

Baixar a Ferramenta e descompactar na pasta do Pentaho
<http://community.pentaho.com/> - <http://kettle.pentaho.com/pdi-ce-4.2.0-stable.zip>



Para iniciar o PDI: Spoon.bat
Neste caso, vai carregar um aplicativo. Fechar duas janelas na inicialização.

7

8

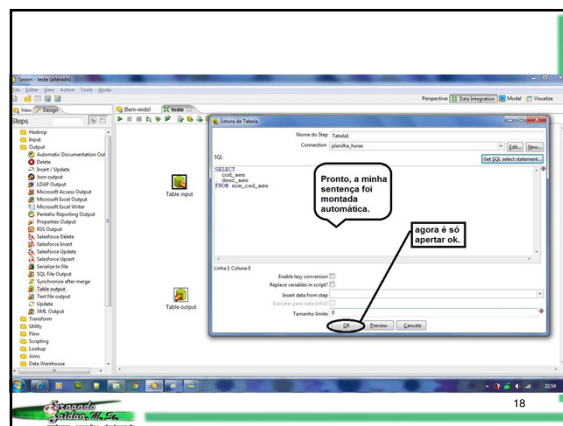
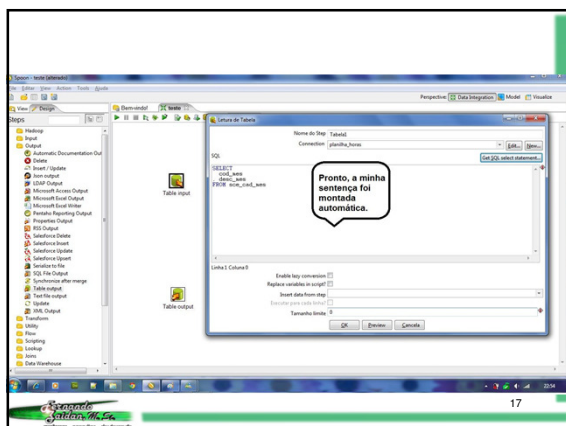
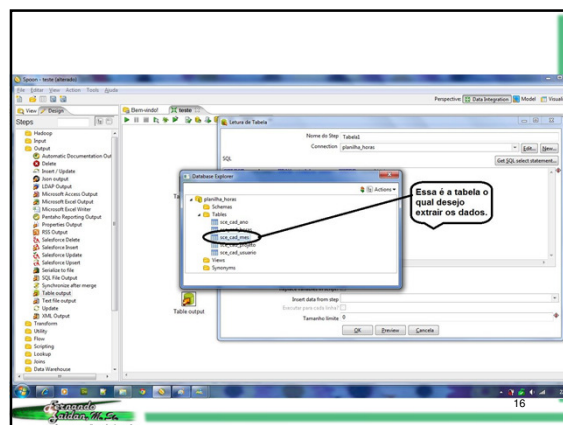
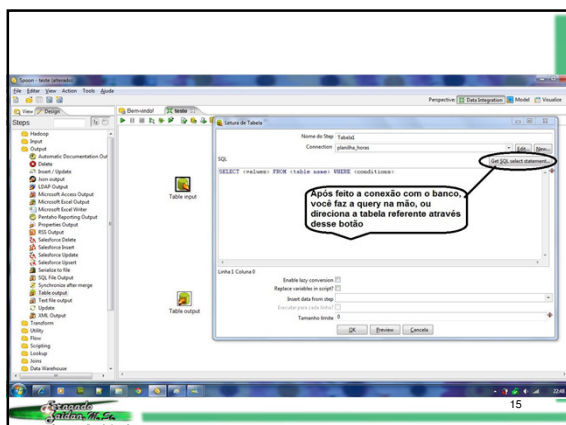
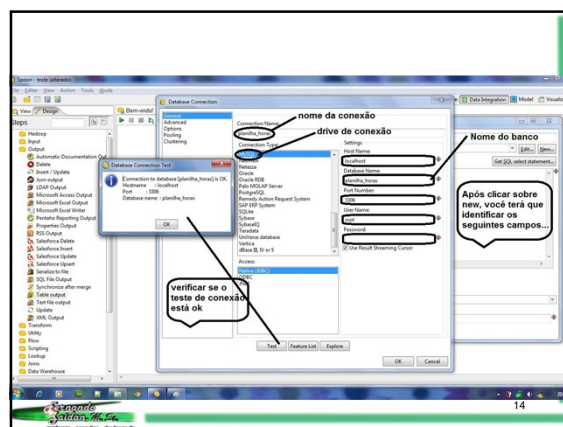
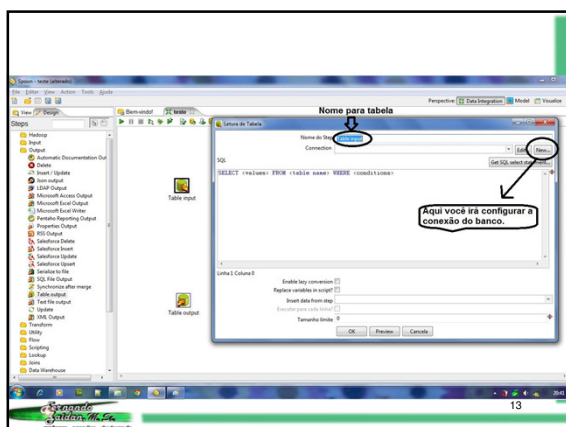
9

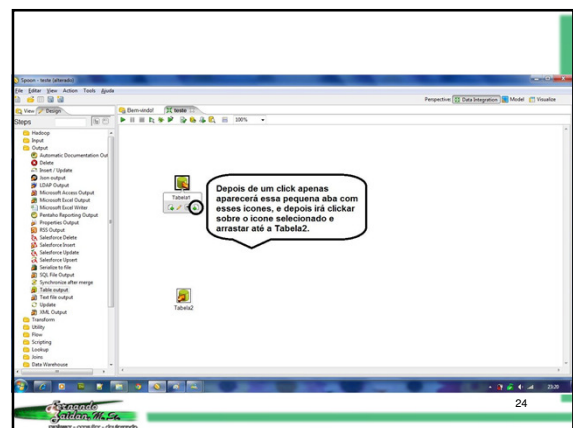
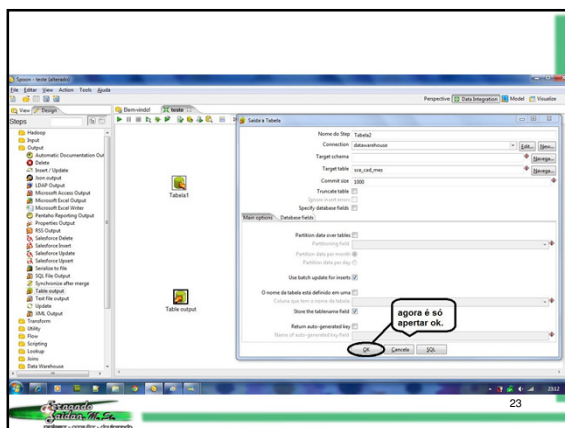
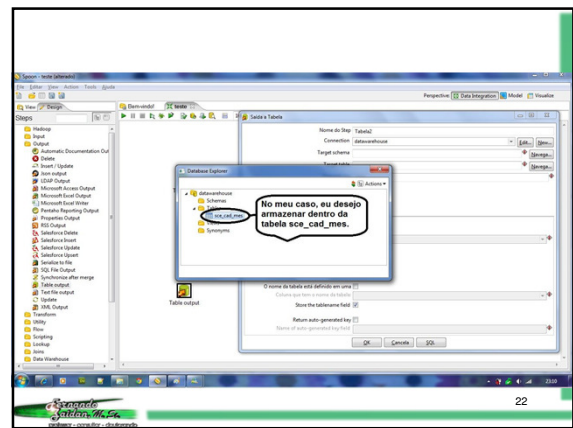
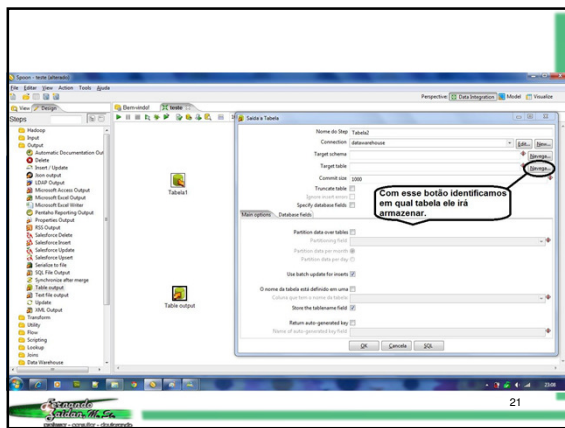
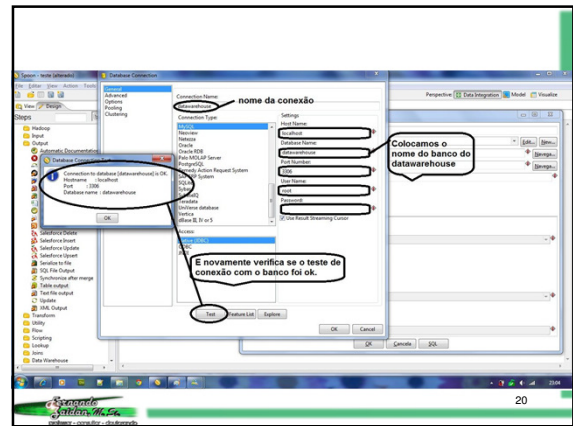
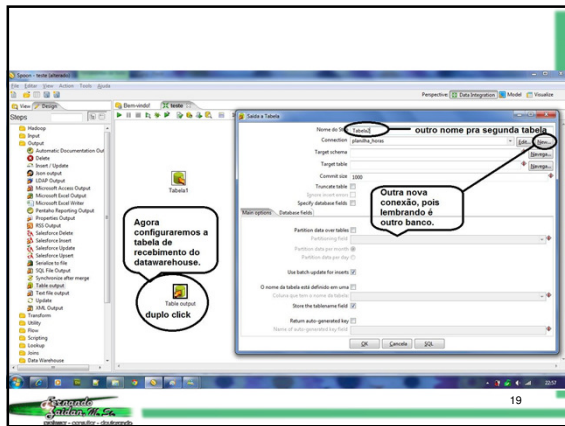
10

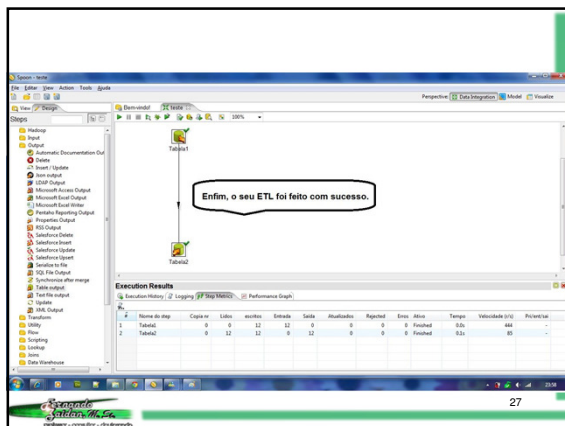
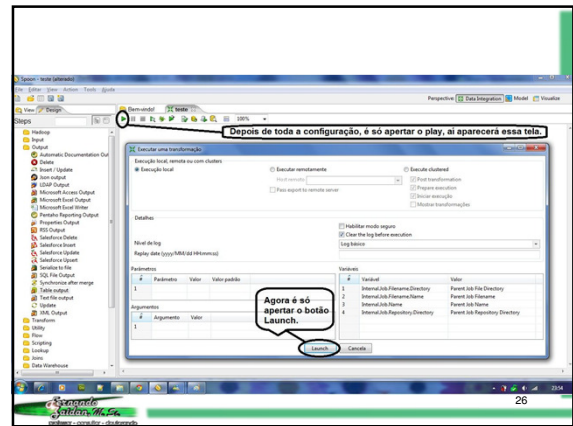
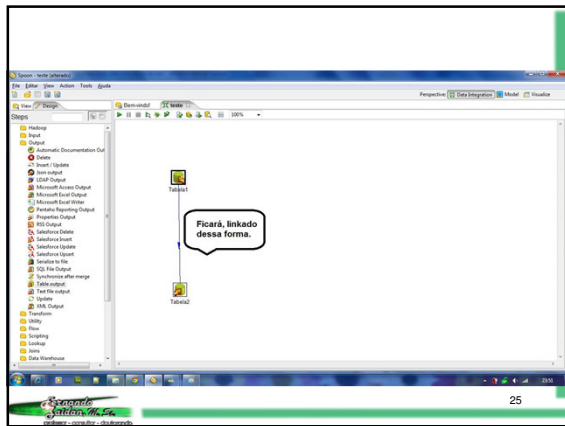
11

O mesmo para Output – Colocar um Table Output

12







Referências

Pentaho História. Disponível em <<http://www.multilingualarchive.com/ma/enwiki/pt/Pentaho>> Acesso em: 09 fev. 2012.

Pentaho. Disponível em <<http://www.pentaho.com>> Acesso em: 19 fev. 2012.

Blog Professor Coruja. Disponível em <<http://blog.professorcoruja.com>> Acesso em: 19 fev. 2012.

Pentaho Community. Disponível em <<http://community.pentaho.com>> Acesso em: 19 fev. 2012.

Pentaho BI Suite – Enterprise Edition Intro. Disponível em <<http://www.youtube.com/watch?v=V2coaxJfCo>> Acesso em: 20 fev. 2012.